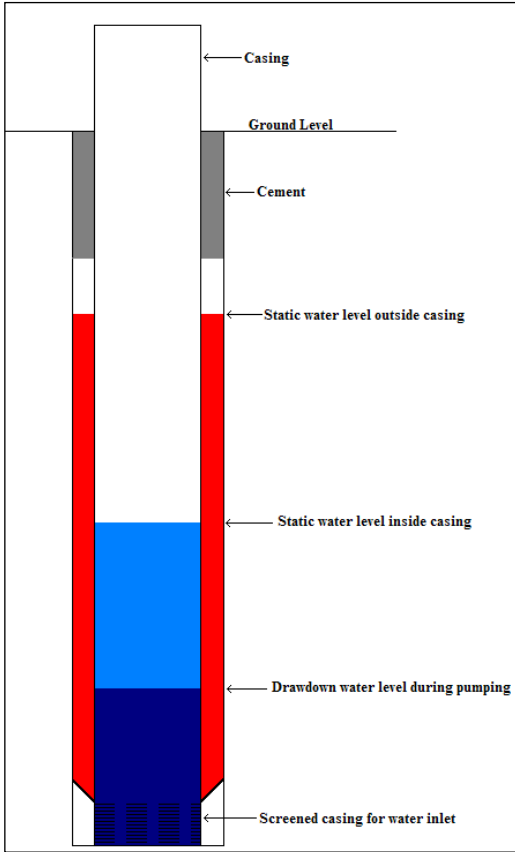
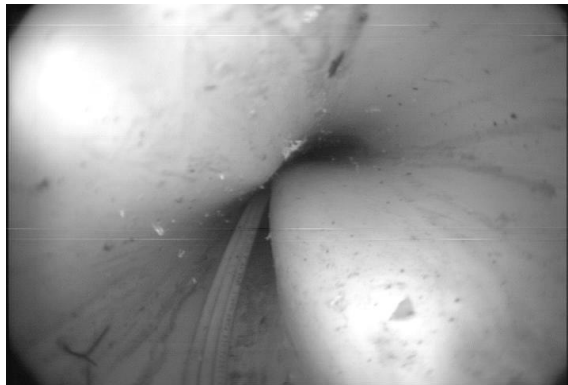


Bee Cave Drilling, Inc.

Choosing the right casing for your well



The casing is the most important part of a water well system. Without it, your well collapses and will have to be drilled again. For years, the drillers in this area have struggled with casing collapse. The column on the outside of the casing fills up with seep water, while the water inside the casing pushes back out. When the water level drops during pumping, the water on the outside pushes in on the casing. This is even worse during drought periods. If the pressure on the casing is



more than it is designed to handle, then the casing will collapse. This ruins the well, and in many cases, captures the pump.

PVC casing is widely used because of its low cost and efficiency. However, PVC has limited strength that can be a problem for the deeper wells that we have in our area. During recent years, many wells that were cased with the wrong grade of pipe and have collapsed. We ran cameras into some of the wells and captured pictures of the collapse. Our customers have grown tired of this problem.

If you are drilling a deep well, consider using the right casing for your well. It will pay for itself in the long run. See the chart that shows the collapse pressure rating of each grade of PVC casing. How deep is your well going to be? Which casing makes sense for you? You can save a buck by going with the weaker pipe, but you may pay for it in the end. We at Bee Cave Drilling are tired of this problem. **We have made a commitment to quality, even though we may lose a job over price. I never want to have this discussion with another one of my customers again.**

